

Radius

April 2014

Issue 97

A newsletter for Camphill Special School families

"Receive the children with reverence, educate them with love, send them forth in freedom" - Rudolf Steiner

The Explorers Club: Raising A Son With Special Needs

by Kim Kupfer

Willie was invited to a dinner at The Explorers Club in New York City with several members of his community from Camphill Special School. Guy, the Director Of Development, called me yesterday to ask if I would allow him to go. I, of course, said yes!

I cannot stop thinking about this exciting adventure Willie will take tomorrow. But really I can't stop thinking about how the world of Special Needs fits together with a club recognizing and honoring fantastic explorers. I mean I understand that The Explorer's Club trip is a fundraising mission. But how do "Disabled Children" intersect with gifted adventurers of our world?

First read about The Explorers Club:

"Founded in New York City in 1904, The Explorers Club promotes the scientific exploration of land, sea, air, and space by supporting research and education in the physical, natural and... *(continued on page 4)*



Willie and Alasdair in the library of the Explorers Club, photo credit: Roxxe Ireland

CALENDAR OF EVENTS

April 6	Residential students return
April 7	Classes resume
April 19	Twelfth grade play for families and guests, 10:45am
April 20	Easter Sunday
May 30	ProAm Gala
May 31	ProAm Tennis Tournament and Clinics

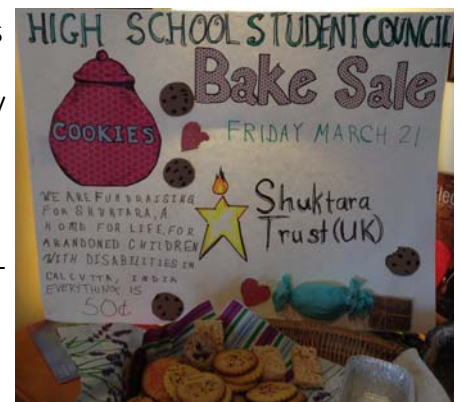
Thursday Concerts are at 3:00 PM in the Blue Room, all are welcome

Student Council holds bake sale

by Lisa Schmitz

On Friday March 21st the High School Student Council held a bake sale to raise funds for Shuktara Trust (UK). Shuktara provides a home for life for abandoned children with disabilities in Calcutta, India. It only takes a few dollars to provide for many of their needs.

Through the hard work of the student council members, the life skills crew, the garden crew, the baking club, the tenth grade and all of those who participated we were able to raise \$125.00. A variety of sweet treats were available: chocolate chip cookies, sugar cookies, brownies and rice krispy bars for the dairy/gluten free crowd or those with a really sweet tooth. The brownies were a big hit, next time we will make more of them. A big thank you to everyone!



A beautiful poster advertising the bake sale was made by Galya, grade nine

Around the world eighty days: Fasching edition



Zachary and Michael are a matador and bull in "Spain"



Alana, Ashley, and Sasha are Native Americans



Galya plays bocce ball with Andreas and Leon



The students in Catalpa get dressed for "Japan"



Coworker Courtney and Jordan in "France"



Emma and Bobby teach the hula

Welcome Baby Albert!



Congratulations to Anna and Joe on the birth of Albert Emilio Harris born on March 16. He weighed 9 lbs and was 21 inches long. Mother and baby are doing well!

Celebrating our 50th Anniversary
 Extraordinary children. Extraordinary possibilities.
 CAMP HILL SPECIAL SCHOOL

SAVE THE DATE
 FOR THE
CAMP HILL PROAM
 MAY 30 AND 31, 2014

Happenings from the classrooms

Grade eight has been enjoying the teaching of Mandla Quabe our third year seminar student who is completing his student teaching with us. Mandla is teaching the biography of Nelson Mandela and every morning we start the day with songs in the Xhosa language (with clicks!) and the South African gum boot dance.



Grade eight does the gum boot dance

Grade nine has been busy studying creation myths with Laura Mooney. Over the course of the last few weeks, the students have been exploring the Lenape (Native Americans), Hawaiian, and even Australian creation myths. Within these myths they discovered how humans were thought to have originated from trees, and how a rainbow serpent was the first dreamer that awoke in the world.

Tenth grade continues our studies on Ancient History and took a great trip to the Franklin Institute. All the students really loved the trip and



enjoyed engaging with the many features in and around the Heart Exhibit! Otherwise, we continued our studies by looking at the landscape of Greece and comparing its multitude of mountains, islands, and the sea with the similar landscape of Egypt. We also found it bears a likeness to our own countryside here in Pennsylvania.

Lambs are here at Beaver Farm and that is a sure sign of spring! During the last two weeks our two third year seminarists have been doing their teaching blocks. Tima is teaching a main lesson to her Garden Crew on *Trees*. They have been doing many hands-on activities related to trees including: collecting branches and making gnomes from them, reciting the tree of the day verses, painting, telling the age of trees by tree hugging, and visiting the woodworker/sculptor Wharton Escherick's studio with Libby's group. Libby has been doing a main lesson on *Dwellings*. They looked at different dwellings on the farm: for wild animals, farm animals, and our three houses for people, and their project is building a dog house for Silver Maple's new puppy, Bob.



Chelsea paints a tree in the greenhouse



Willie cares for a newborn lamb at the farm

ProAm Committee announces raffle prize: beautiful Belize



Belize is a diverse and welcoming nation bordering Mexico and the blue waters of the Caribbean Sea. Tucked away on the lush Placencia Peninsula in southern Belize, Laru Beya is the perfect place to both do nothing and experience everything. The quiet and modern beachfront resort is built for relaxing: with hammocks on every balcony, and the pool, restaurant, and bar mere steps from your room.

The resort is just a short walk from the Garifuna village of Seine Bight and three miles from the restaurant- and nightlife-filled town of Placencia.

And when you're ready to really go exploring, Laru Beya is also conveniently located for adventure, allowing you to easily go snorkeling or scuba in the barrier reef; visit Mayan archeological sites; explore caves; thrill at local wildlife; and delight in delicious cuisine that is distinctly Belizean.

Your week-long trip is valued at over \$4,500.00 and includes:

- Accommodations for four in a two bedroom unit for one week; unit boasts full kitchen and beach front balcony
- Welcome cocktails and a dinner at the resort restaurant
- \$1,500.00 to use for airfare.

Tickets are *\$50 each or three for \$100*, and available online at bidpal.net/camphillproam or by contacting Courtney Coleman at 610.469.9236 ext. 132.



TERMS AND CONDITIONS: All proceeds from the Camphill ProAm and this raffle will benefit the students at Camphill Special School. Camphill Special School coworkers, employees, and any persons living in their households are not eligible to win. Travel package is non-refundable. Travel to be coordinated with donor for a mutually agreed upon week. Flights and all arrangements must be made by winner.

Explorers Club, from page one...

biological sciences. The Club's members have been responsible for an illustrious series of famous firsts: First to the North Pole, first to the South Pole, first to the summit of Mount Everest, first to the deepest point in the ocean, first to the surface of the moon—all accomplished by our members."

And the Mission Statement of Camphill Special School: "Camphill Special School's mission is to create wholeness for children and youth with intellectual and developmental disabilities through education and therapy in extended family living so that they may be better understood and their disabilities moderated, that they may more fully unfold their potential, and that they more fully and meaningfully participate in life."

What these two organizations do have in common is to explore something new that hasn't been discovered before. And I know what the Camphill Special School has recognized what is new: That Children with Disabilities are a gift on earth and have lessons to teach us. This sounds so canned, sappy, and new-age, but it is the genuine perspective at the school. I have lived it for the past 5 years.

Willie is a teacher as well as a student at this very, fabulous school. Through brave exploration, the teachers at the Camphill Special School have found a Willie we never knew. They were the first to show us that our son can

teach us all about patience, accountability, the meanings of success and progress, healing through imagination, compensation strategies, true intimacy, the power of love, to name a few.

So Willie will be proud to visit The Explorers Club tomorrow. To be the only student from Transition Program in attendance. To adventure to New York City. To meet lots of new people. And of course to eat a gourmet dinner. But in his own right, Willie travels to The Explorers Club as a messenger and an ambassador of the "True Explorers at the Camphill Special School."



Our mission is to create wholeness for children and youth with intellectual and developmental disabilities through education and therapy in extended family living.

Items for the May issue of *Radius* must be submitted by April 21, 2014. Materials should be submitted to cschmidt@camphillspecialschool.org

All material submitted is subject to editing and is included on a space available basis.

610.469.9236
camphillspecialschool.org

Camphill Special School
1784 Fairview Road
Glenmoore, PA 19343

The 2014 Camphill ProAm raffle wants to send you to ...



Belize is a diverse and welcoming nation bordering Mexico and the blue waters of the Caribbean Sea. Tucked away on the lush Placencia Peninsula in southern Belize, Laru Beya is the perfect place to both do nothing and experience everything. The quiet and modern beachfront resort is built for relaxing: with hammocks on every balcony, and the pool, restaurant, and bar mere steps from your room.

The resort is just a short walk from the Garifuna village of Seine Bight and three miles from the restaurant- and nightlife-filled town of Placencia. And when you're ready to really go exploring, Laru Beya is also conveniently located for adventure, allowing you to easily go snorkeling or scuba in the barrier reef; visit Mayan archeological sites; explore caves; thrill at local wildlife; and delight in delicious cuisine that is distinctively Belizean.

Your week long trip is valued at over \$4,500 and includes:

- Accommodations for four in a two bedroom unit for one week; unit boasts full kitchen and beach front balcony
- Welcome cocktails and one dinner at the resort restaurant
- \$1,500 to use for airfare

Winning ticket will be drawn at the ProAm Gala on Friday, May 30, 2014

YOU NEED NOT BE PRESENT TO WIN!

TERMS AND CONDITIONS: All proceeds from the Camphill ProAm and this raffle will benefit the students at Camphill Special School. Camphill Special School coworkers, employees, and any persons living in their households are not eligible to win. Travel package is non-refundable. Travel to be coordinated with donor for a mutually agreed upon week. Flights and ALL travel arrangements must be booked by winner.

Raffle tickets are \$50 each or three for \$100 !

Name _____ Phone _____

Address _____

City, State Zip _____ E mail _____

One (1) ticket (\$50) Three (3) tickets (\$100) _____ tickets

Payment method: Check in the amount of \$ _____ made payable to Camphill Special School enclosed

Charge \$ _____ to my Visa MasterCard Discover American Express

Card no. _____ Exp. Date _____

Mail: Camphill Special School, 1784 Fairview Road, Glenmoore, PA 19343 Phone: 610.469.9236 x132 Online: camphillspecialschool.org

THANK YOU FOR YOUR SUPPORT!